

coresuite enterprise search Skype™ Plug-In

Version 1.00

coresuite enterprise search Skype™ Plug-In

© **coresystems**

All rights reserved. No parts of this work may be reproduced in any form or by any means - graphic, electronic, or mechanical, including photocopying, recording, taping, or information storage and retrieval systems - without the written permission of the publisher.

Products that are referred to in this document may be either trademarks and/or registered trademarks of the respective owners. The publisher and the author make no claim to these trademarks.

While every precaution has been taken in the preparation of this document, the publisher and the author assume no responsibility for errors or omissions, or for damages resulting from the use of information contained in this document or from the use of programs and source code that may accompany it. In no event shall the publisher and the author be liable for any loss of profit or any other commercial damage caused or alleged to have been caused directly or indirectly by this document.

Printed: Juli 2010 Windisch, Switzerland

Table of Contents

Part 1 Introduction

Part 2 Installation

Part 3 Usage

Part 4 Support

1 Further Support

Index

5

7

11

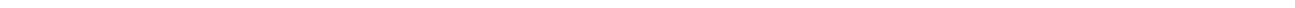
15

0

0

Introduction

1



1 Introduction

The Skype™ Plug-In allows to integrate the Skype™ functionalities with the **coresuite enterprise search**.

The functionalities provided are here resumed:

1 -- INCOMING CALLS

1.A -- Skype online number incoming Calls (SkypeIn™) / Incoming calls from public telephone network

Whenever an incoming call to your personal Skype Online Number (SkypeIn™) is detected, this rule searches for a BP Contact registered in the system with the incoming phone number.

Once the BP Contact is detected the enterprise search searches for all the documents related to this BP Contact.

If no BP Contact is detected, the rule searches for a BP registered in the system with the incoming phone number.

Once the BP is detected the enterprise search searches for all the documents related to this Business Partner.

1.B -- Skype Peer-to-Peer calls

If the incoming call is coming from a Skype contact rather than a PSTN number, the Enterprise Search searches all the document related to such Skype Contact Name.

2 -- OUTGOING CALLS

2.A -- Business Partner Contacts

Via right click on a certain Business Partner Contact it is possible to start a Skype Call with this Business Partner Contact.

It is possible to call the Business Partner Contact using either his "Telephone 1" or "Mobile Phone" number.

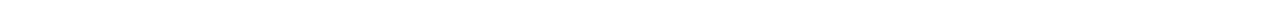
2.B -- Business Partner

Via right click on a certain Business Partner it is possible to start a Skype Call with this Business Partner.

It is possible to call the Business Partner using his "Tel 1" number.

Installation

2



2 Installation

Prerequisites

- [Skype™ software](#)
- [coresuite enterprise search](#)
- Skype™ Plug-In installation package
- coresuite customize 2.81

Skype Plug-In installation package

The installation package **Skype_PlugIn.zip** contains two files:

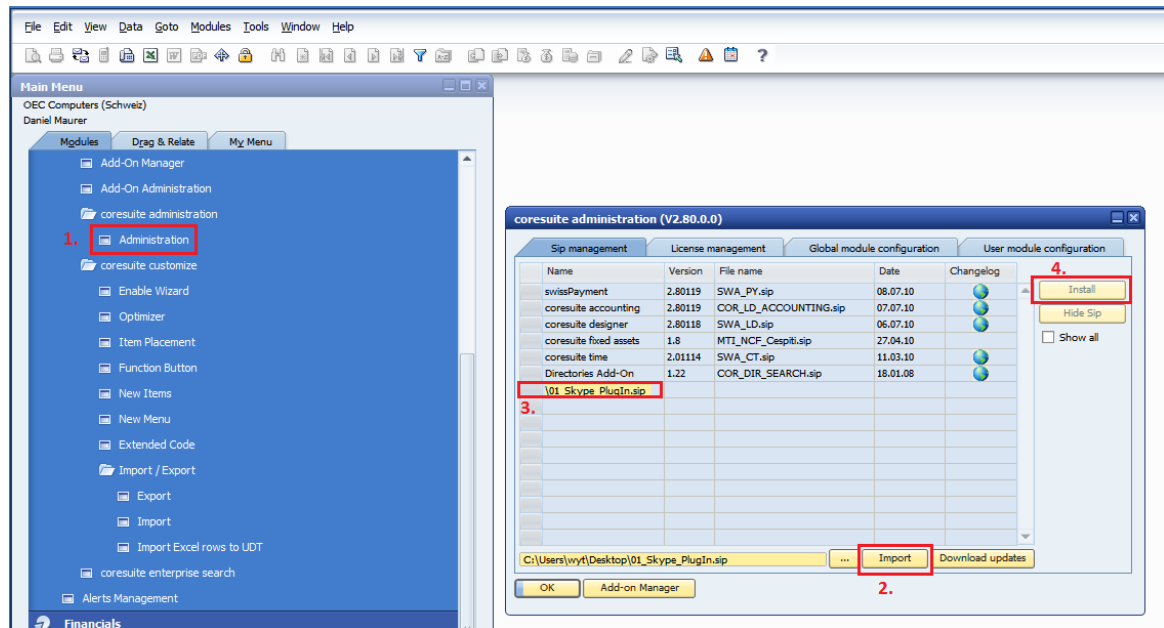
1. **01_Skype_PlugIn.sip** : is the installation package containing the dll to allows the interaction with the Skype™ software.
2. **02_Skype_PlugIn.cocu** : is the **coresuite customize** rule used to bind Skype™ to the **coresuite enterprise search**.

Unzip the **Skype_PlugIn.zip** package and install the two components as here described.

Install the .sip file

1. Open the **coresuite** administration menu
2. Import the **01_Skype_PlugIn.sip** file
3. Select the new Skype™ entry
4. Install the package

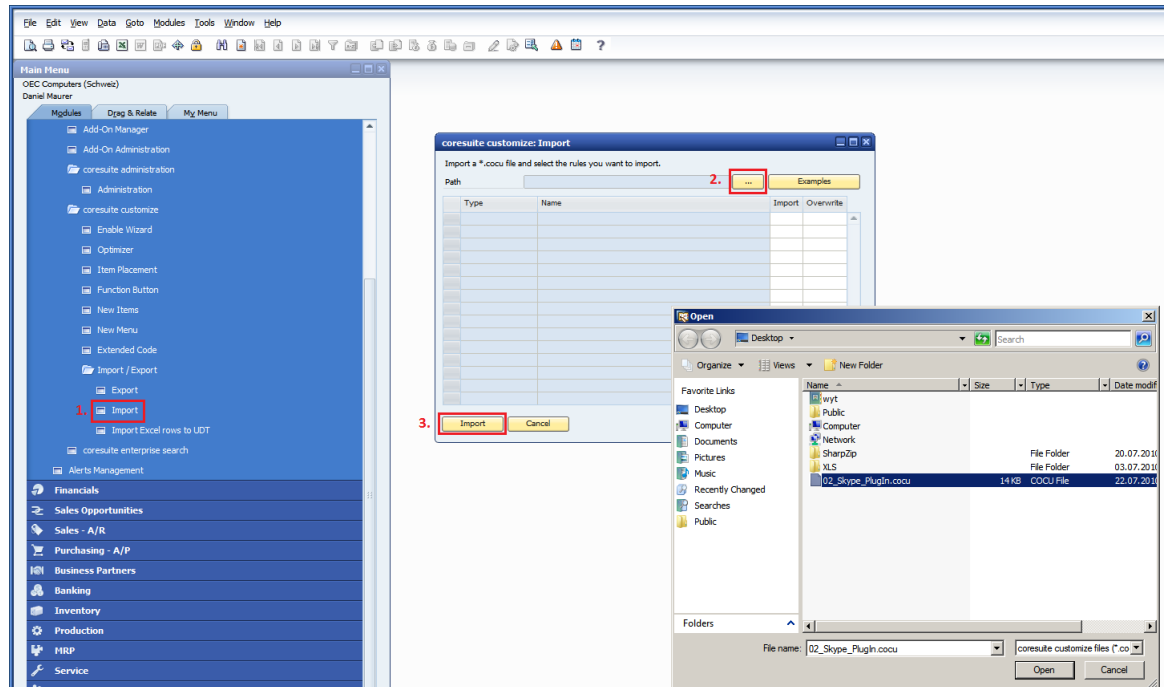
Once completed these steps please restart the **coresuite** Add-On.



Import the .cocu rule

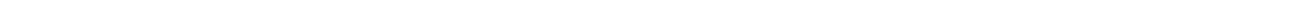
1. Open the **coresuite customize** import menu
2. Select the **02_Skype_PlugIn.cocu** file to import
3. Import the rule

After restarting the **coresuite** Add-On the Skype™ plug-in will be ready to use.



Usage

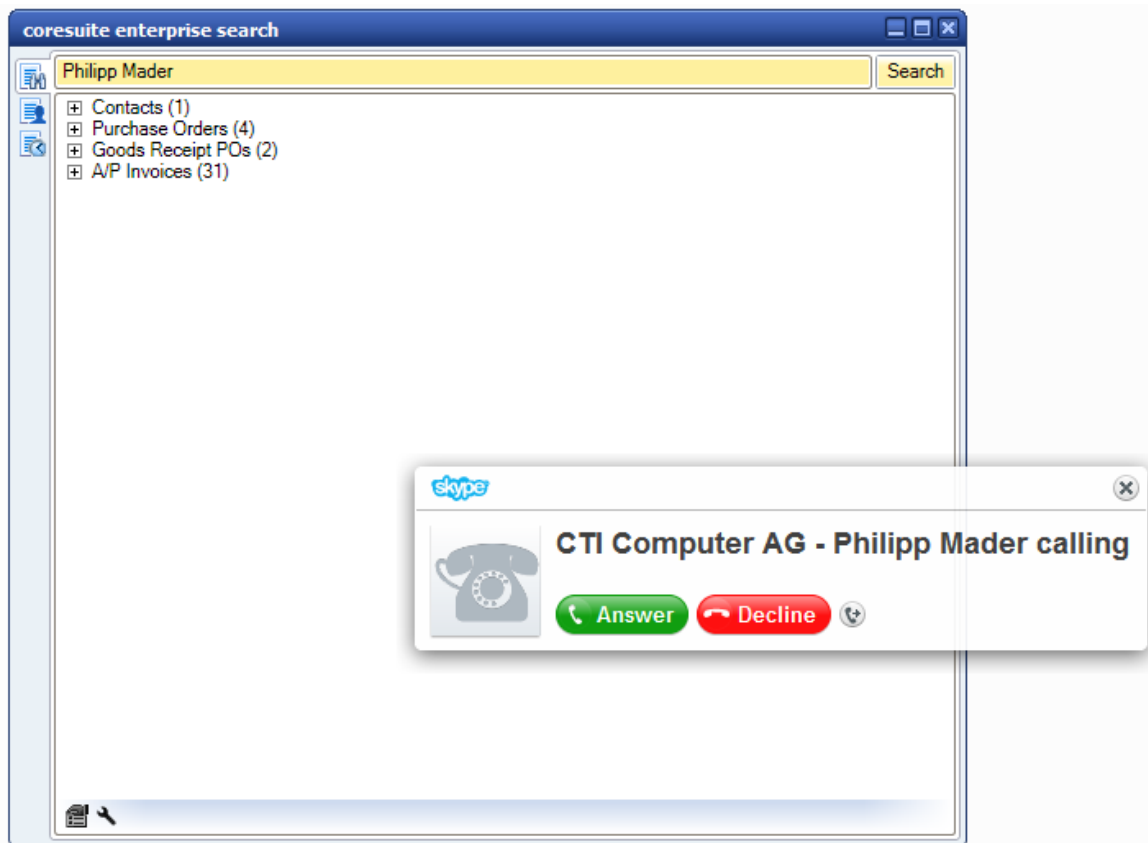
3



3 Usage

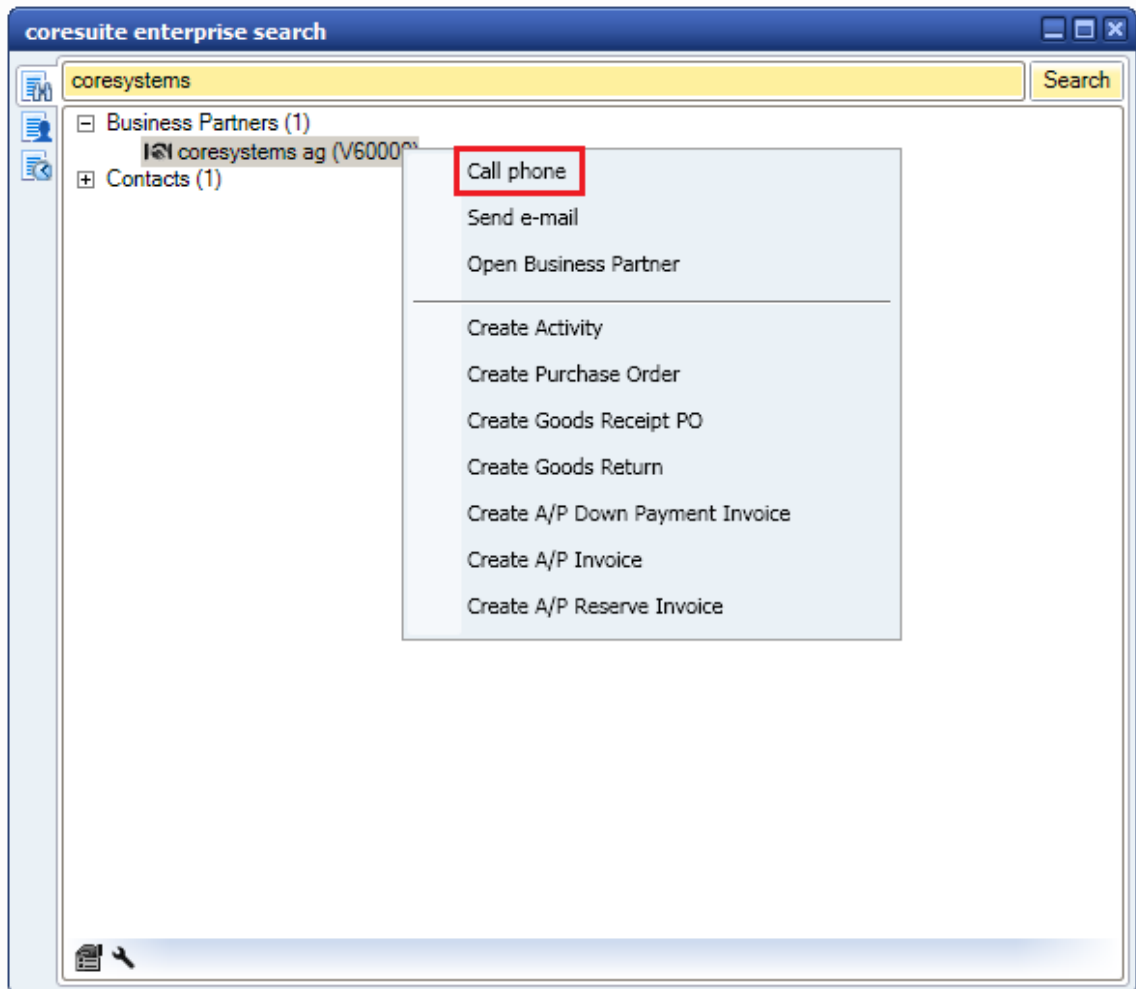
Incoming Calls

When an incoming call is detected, the **coresuite enterprise search** starts searching automatically for all the documents related to the calling Business Partner Contact \ Business Partner.

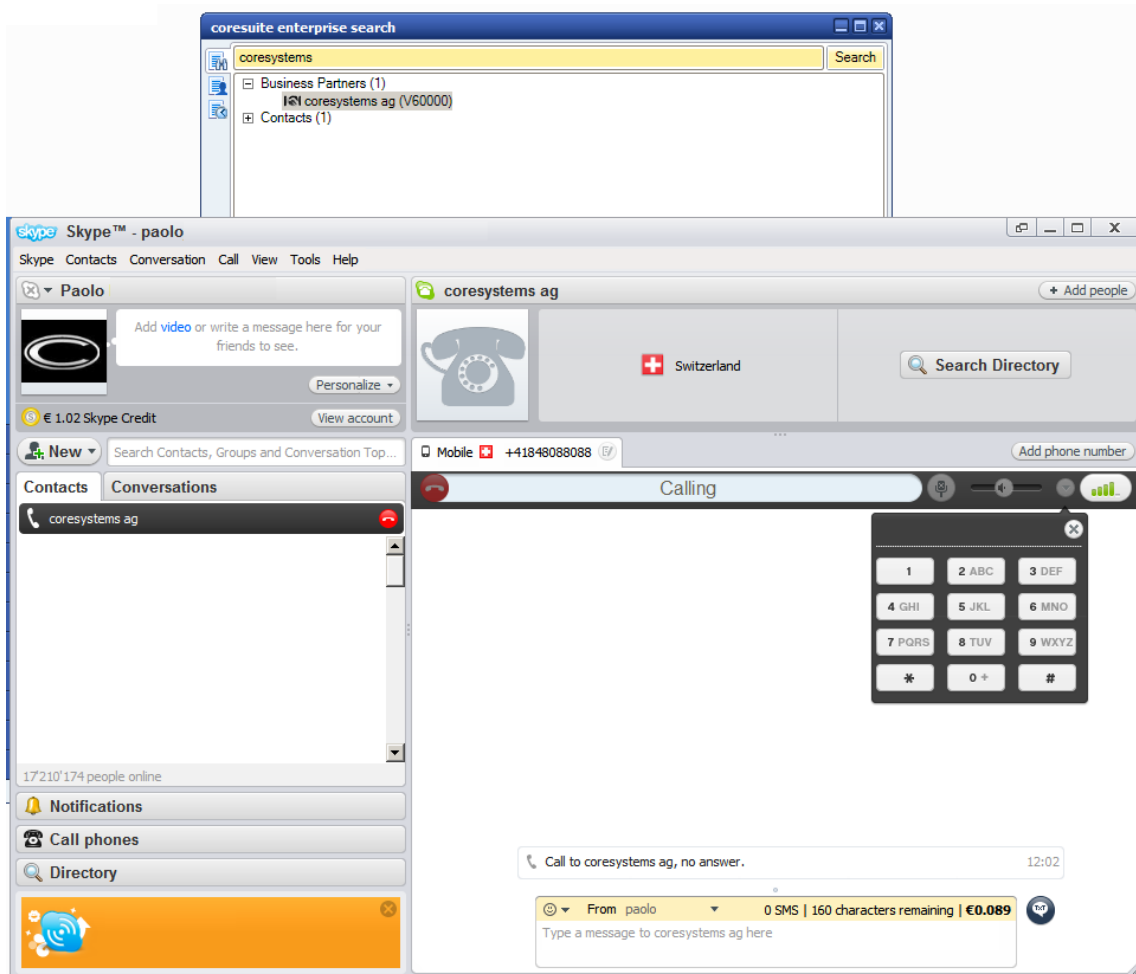


Outgoing Calls

Right clicking a certain Business Partner Contact / Business Partner the user can start an outgoing phone call to this Business Partner Contact / Business Partner.



The Skype™ window will pop-up



Support

4



4 Support

Further support is available on [coresystems support service webpage](#) .

A Topic related to the Skype Plug-In is available in our [Support Forum page](#).

coresystems

INFO

For further information and
support visit our product
website www.coresuite.com

Infoline:
+41 (0)848 088 088